



NEWGRIND

OUTPERFORMING FROM EDGE TO EDGE

RHINO VAC RV8

OPERATOR'S MANUAL

RHINOVAC RV8 220 VOLT



- 220 Volt Single phase/ Three phase
- 30 amp
- 8 gallon Lexan barrel
- 290 CFM
- 2" Vacuum port
- 220V Outlet
- Variable speed control
- Extra large 0.3 micron quick release HEPA filter
- Super compact and sleek design
- Specialty urethane wheels that won't puncture
- Easy access over cords, thresholds, and rough terrain
- Heavy duty all aluminum diamond plate construction
- Vibrating motor to shake off dust buildup on your HEPA filter
- Built-in cyclone pre-separator to filter 90-95% of dust directly into the Lexan barrel
- Bypasses your HEPA filter thus extending its life
- Reduces frequency of filter cleaning



For your personal safety, READ and UNDERSTAND before using.

SAVE THESE INSTRUCTIONS FOR FUTURE REFERENCE.

RHINO VAC RV8 220V USER MANUAL

TABLE OF CONTENTS

EQUIPMENT USES.....	1
RHINO VAC RV8 DIAGRAM	3
MACHINE SPECIFICATIONS	4
SAFETY INSTRUCTIONS	5
Work Area Safety	5
Electrical Safety	5
Personal Safety	5
OPERATING INSTRUCTIONS	6
Electrical	6
Filter	6
Optional Filter Clean	6
Cyclone	7
Blockage	7
Dustbin	7
2" Vacuum Port	8
220V Outlet	8
CFM Control	8
Damp Grinding	8
Mobility	8
Warranty	8
Maintenance	8
CERTIFICATION OF TEST	9
LIMITED EQUIPMENT WARRANTY OF SALE	10
FORCE MAJEURE	10
LIABILITY LIMITATIONS	11
TERMS & CONDITIONS	11
AGREEMENTS	12

RHINO VAC RV8 220V DIAGRAM

HEAVY DUTY ALUMINUM DIAMOND
PLATE CONSTRUCTION

VELCRO STRAPS FOR
POWER CABLE AND
VACUUM HOSE

25' VACUUM HOSE

URETHANE WHEELS

360° ROTATING FRONT URETHANE WHEELS

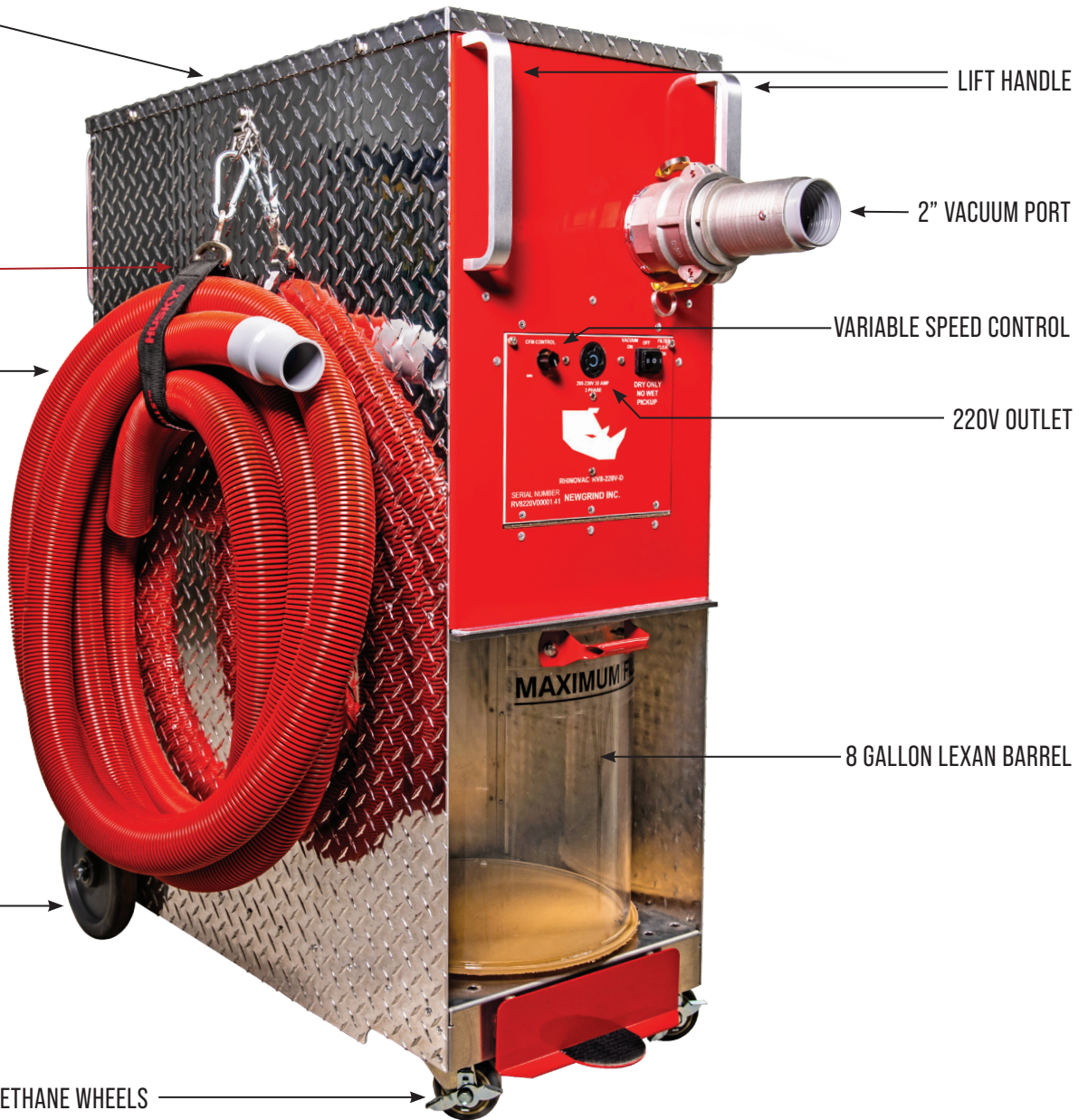
LIFT HANDLE

2" VACUUM PORT

VARIABLE SPEED CONTROL

220V OUTLET

8 GALLON LEXAN BARREL



- 220 VOLT SINGLE PHASE/THREE PHASE
- 30 AMP
- 290 CFM
- EXTRA LARGE 0.3 MICRON QUICK RELEASE HEPA FILTER
- VIBRATING MOTOR TO SHAKE OFF DUST BUILDUP ON YOUR HEPA FILTER
- BUILT-IN CYCLONE PRE-SEPARATOR TO FILTER 90-95% OF DUST

RHINO VAC RV8 220V MACHINE SPECIFICATIONS

POWER	30 AMP/220 VOLT Single Phase/Three Phase
MAXIMUM WATTS DRAW	6600 W
AVERAGE PRODUCTION RATE	290 CFM
MACHINE WEIGHT	200 lbs
VARIABLE SPEED CONTROL	YES
DRY VACUUM ONLY	YES
2" VACUUM PORT	YES
220V OUTLET	YES
8 GALLON LEXAN BARREL	YES
EXTRA LARGE 0.3 MICRON QUICK RELEASE HEPA FILTER	YES
SUPER COMPACT AND SLEEK DESIGN	YES
SPECIALTY URETHANE WHEELS THAT WON'T PUNCTURE	YES
EASY ACCESS OVER CORDS, THRESHOLDS AND ROUGH TERRAIN	YES
HEAVY DUTY ALUMINUM DIAMOND PLATE CONSTRUCTION	YES
VIBRATING MOTOR SHAKES OFF DUST BUILDUP ON HEPA FILTER	YES
BUILT-IN CYCLONE PRE-SEPARATOR TO FILTER 90-95% OF DUST	YES
REDUCED FREQUENCY OF FILTER CLEANING	YES

RHINO VAC RV8 220V SAFETY INSTRUCTIONS



WARNING! READ AND UNDERSTAND ALL INSTRUCTIONS.

Failure to follow all instructions listed below, may result in electric shock, fire and/or serious personal injury. SAVE THESE INSTRUCTIONS.



WORK AREA SAFETY

1. Keep your work area clean and well lit. Cluttered floors and dark areas invite accidents.
2. Do not operate equipment in explosive environments, such as in the presence of - flammable liquids, gases or dust. Grinding can create sparks which may ignite the dust or fumes.
3. Keep bystanders, children, pets and visitors away while operating equipment.



ELECTRICAL SAFETY

1. Do not abuse the cord. Never use the cord to pull the equipment or pull the plug from an outlet. Keep cord away from heat, oil, sharp edges or moving parts. Replace damaged cords immediately. Damaged cords increase the risk of electric shock.
2. When operating equipment outside, use an outdoor extension cord marked "W-A" or "W". These cords are rated for outdoor use and reduce the risk of electric shock.
3. USE THE PROPER EXTENSION CORD. Make sure your extension cord is in good condition. When using an extension cord, be sure to use one heavy enough to carry the current your product will draw. An undersized cord will cause a drop in line voltage resulting in loss of power and overheating.

FOR THE RV8 USE 10-GAUGE CORD OR LARGER.



PERSONAL SAFETY

1. **DO NOT** let comfort or familiarity with product (gained from repeated use) replace strict adherence to equipment safety rules. If you use this equipment unsafely or incorrectly, you can suffer serious personal injury.
2. Stay alert, watch what you are doing and use common sense when operating equipment. Do not use equipment while tired or under the influence of drugs, alcohol, or medication.
3. Adequate ventilation of your work area is very important when using equipment. Use a dust mask or appropriate respirator.
4. Use safety equipment. Always wear eye protection, dust mask, non-skid safety shoes, hard hat and hearing protection. Ordinary eye or sunglasses are NOT eye protection.

RHINO VAC RV8 220V OPERATING INSTRUCTIONS

ELECTRICAL

1. The plug end for electrical connection is a 30 Amp 230 Volt Three phase plug.
Input power should be 208 - 230 Volt Single Phase or 3 Phase.
(3 Phase supplies Single Phase to the Vac Motor and pass through 3 Phase for the grinder)

- **CAUTION:**

Exceeding voltage range will cause immediate damage to components.

Always use the correct male plug to attach to power source 30 Amp 220 Volt three phase.

The minimum power is 30 Amp Single-Phase 208 - 230 Volt. Ideally you should use a 30 Amp breaker.

- After the power is properly connected, test the vacuum motor, filter clean feature and 220V accessory outlet to make sure that they are all in good working order.

FILTER

- This equipment has a HEPA filter that filters 99.97% @ 0.3 micron of particles and has been certified. The copy of the certification is at the end of the manual.
- The filter chamber door seal should be in good condition to maintain performance. To replace, use sticky backed foam weather stripping 3/4" wide by 1/2" thick.
- Check filter chamber for excess dust buildup and clean if needed. Light buildup can be cleaned by turning on the vibrating motor on the switch located on the top right hand of the control panel. Turn the filter clean to on position, with the filter chamber door closed, allow the vibrator to run for a few minutes.
- After this step is complete, turn off filter vibrating motor and empty dust tray. Vacuum up dust buildup around filter chamber door opening to allow the filter door to be seated properly, so that once closed it forms a tight seal.

OPTIONAL FILTER CLEAN

- Release filter from carriage by removing latch retaining clips and then pulling up both latches at the same time. This will cause the filter cradle to drop down releasing the filter.
- Carefully lift filter out of carriage and place inside of a clean garbage bag. Fold the top of bag into filter to prevent dust from entering the inside of filter.
- Lightly tap base of filter on a smooth surface to free loosened buildup. Repeat if necessary.
- Carefully remove filter from bag and place back in carriage. Evenly engage quick release latches making sure that filter is centered in carriage. Install latch clips to prevent filter latches from releasing while vacuum is in use or being transported.
- Close door and then turn on vibrator for a minute or two.

Always be careful not to damage filter in any way as this will result in dust leaking through and cause the vacuum to blow out dust, resulting in airborne dust which is hazardous to breath in.

RHINO VAC RV8 220V OPERATING INSTRUCTIONS

- **CAUTION:**

Do not wash filter and/or blow out with compressed air. This will damage filter material and shorten the life of the filter.

CYCLONE

The RhinoVac RV8 is equipped with a built-in cyclonic pre-separator which, when used properly, will catch up to 95% of incoming dust.

- For the cyclone to work properly the dustbin must be securely engaged and centered. Any air leaking in will drastically reduce cyclone efficiency.
- When functioning correctly you will notice a swirling motion from the dust entering the bin.
- Do not allow the dustbin to fill more than 3/4 full. This will cause the cyclonic action to stop and all dust entering the vacuum will go directly to the filter chamber causing premature dust buildup.

BLOCKAGE

- If the cyclone becomes blocked with debris, or a rag, etc. it can be removed by carefully hooking out debris or rag using a small piece of wood or coat hanger. Do not force debris or bang cyclone, as damage may occur.

DUSTBIN

Dustbin is made of clear Lexan. It has an 8-gallon capacity but should not be filled past approximately 6 gallons.

- To release bin, turn off vac and step on the foot plate.
- Barrel lift mechanism will disengage and allow the bin to drop. Grasp handle and slide out until rim clears vac housing. Gently tip barrel forward so that it's resting on the vac base at the back and the floor at the front.
- Take a garbage bag and slide over top of barrel. Gently tip barrel forward while holding bag snug against dustbin and empty dust into bag. Gently remove barrel and discard bag.
- Clean barrel chamber of any dust which may have fallen from cyclone.
- Slide barrel back, step on foot plate and the barrel must be centered and up against the back of the barrel chamber.

RHINO VAC RV8 220V OPERATING INSTRUCTIONS

- **CAUTION:**

Dropping barrel, banging on floor, or otherwise handling roughly may cause damage and/or air leakage, which will affect cyclone performance.

2" VACUUM PORT

- The RhinoVac RV8 comes Standard with a 25ft flexible 2" vac hose, to use on machines with a 2" vac port. A 2" to 1-1/2" reducer cuff is included for using the vac wand.

220V OUTLET

- The 220V is available for any 230V accessory such as floor grinder that is rated to MAX 220V 30 AMPS.
- The 220V outlet will NOT trip if there is a ground short or the load exceeds 30 Amp. The equipment must be plugged in a circuit that has a breaker of 30 Amp.

CFM CONTROL

- The CFM control knob is located on the upper left corner of the control panel. When first turning on the RhinoVac the CFM control must be in the max position. This allows the vac motor to start and once running the speed can be turned down.
- Min = +/- 70CFM
- Max = 325 CFM

DAMP GRINDING:

When damp grinding, turn down CFM or slightly raise floating dust skirt on the machine to not suck up water but still prevent airborne dust.

MOBILITY:

The RhinoVac can be tilted back on its rear tires to allow for rough terrain, slopes, and stairs. It is recommended that the front casters be only used to roll the vacuum on smooth floors.

WARRANTY: Removal or modification of any components will void warranty.

MAINTENANCE:

- Clean with a clean damp clothe and some dish soap.
- To protect diamond plate spray with WD-40 and buff with a microfiber clothe.

RHINO VAC RV8 220V CERTIFICATION OF TEST



10 Abbott Court, Building C, Unit 303 • Brantford ON N3S 0E7 Canada
 Tel: (905) 648-5500 • Fax: (905) 648-5800
 Tel: 1-888-689-1235 • Fax: 1-866-491-1236
 Website: www.apcfilters.com

Certification of Test (CoT)

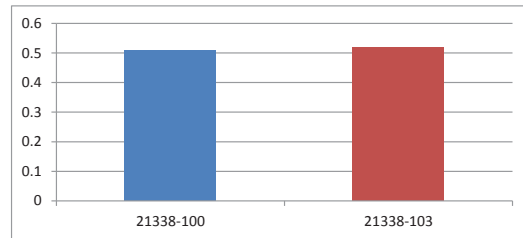
Test Date	August 31, 2021
Test Type	IEST-RP-CC001.6
Test Aerosol	KCl, Neutralized
Customer	New Grind Inc.
Manufacturing Order	21338
Serial Number Range	N/A

Part Number	IVF511
Nominal Dimensions	10.38" OD x 16.50" Length
Pleat Quantity	146 Pleats
Media Lot Number	N/A
Media Type	HEPA, Composite PTFE
Est. Media Surface Area	62.61 sq. ft.

Filter Front



Pressure Drop Graph (Each Sample)



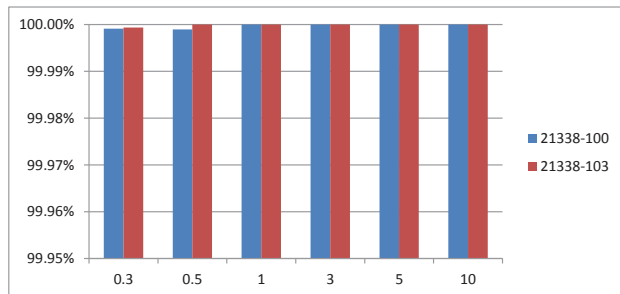
Test Conditions

Test Air Temp. (degrees in F.)	72.9
Relative Humidity (%)	39
Barometric Pressure (in Hg.)	29.1

Test Results

Sample 1	21338-100	
Airflow Rate [CFM]	500	
Filter Resistance [in WG]	0.51	
Efficiency [%] @ 0.3µm	99.999%	
Sample 2	21338-103	
Airflow Rate [CFM]	500	
Filter Resistance [in WG]	0.52	
Efficiency [%] @ 0.3µm	99.999%	

Graph of Efficiency (%) vs. Particle size (µm)



Filter Rating "if applicable" HEPA, 99.97% @ 0.3µm

Approvals

Tested By:	Joshua Kuetemann
Date:	August 31, 2021
Approved By:	David Tiet
Date:	September 1, 2021

Signed: *JK*

Signed: *David Tiet*

APC Filtration certifies that this shipment was tested and meets its specifications.

It is certified that the product's serial numbers detailed hereon have been inspected and tested in accordance with the conditions and requirements of contract of purchase order and unless otherwise noted, conform in all respects to the specifications relevant to thereto.

All products have been 100% leak tested, as required by the customer, and are in accordance with the test parameters as specified on the drawing.

ISO 9001:2015



www.apcfilters.com

RHINO VAC RV8 220V LIMITED EQUIPMENT WARRANTY OF SALE

NewGrind Inc. warrants that each new unit manufactured by NewGrind Inc. to be free from defects in material and workmanship in normal use and service for a period of (3) three years from date of shipment to the original owner. Accessories or equipment furnished and installed on the product by NewGrind Inc. but manufactured by others, including, but not limited to engines, motors, electrical components, transmissions etc., shall carry the accessory manufacturers own warranty.

NewGrind Inc. will, at its option, repair or replace, at the NewGrind Inc. factory or at a point designated by NewGrind Inc. any part which shall appear to the satisfaction of NewGrind Inc. inspection to have been defective in material or workmanship. NewGrind Inc. reserves the right to modify, alter and improve any part or parts without incurring any obligation to replace any part or parts previously sold without such modified, altered or improved part or parts.

This warranty is in lieu of and excludes all other warranties, expressed, implied, statutory, or otherwise created under applicable law. In no event shall seller or the manufacturer of the product be liable for special, incidental, or consequential damages, including loss of profits, whether or not caused by or resulting from the negligence of seller and/or the manufacturer of the product unless specifically provided herein.

In addition, this warranty shall not apply to any products or portions there of which have been subjected to abuse, misuse, improper installation, maintenance, or operation, electrical failure or abnormal conditions and to products which have been tampered with, altered, modified, repaired, reworked by anyone not approved by seller or used in any manner inconsistent with the provisions of the above or any instructions or specifications provided with or for the product.

FORCE MAJEURE

Seller's obligation hereunder are subject to, and Seller shall not be held responsible for, any delay or failure to make delivery of all or any part of the product due to labor difficulties, fires, casualties, accidents, acts of the elements, acts of God, transportation difficulties, delays by a common carrier, inability to obtain product, materials or components or qualified labor sufficient to timely perform part of or all of the obligations contained in these terms and conditions, governmental regulations or actions, strikes, damage to or destruction in whole or part of manufacturing plant, riots, terrorist attacks or incidents, civil commotions, warlike conditions, flood, tidal waves, typhoon, hurricane, earthquake, lightning, explosion or any other causes, contingencies or circumstances within CANADA not subject to the Seller's control which prevent or hinder the manufacture or delivery of the products or make the fulfillment of these terms and conditions impracticable. In the event of the occurrence of any of the foregoing, at the option of Seller, Seller shall be excused from the performance under these Terms and Conditions, or the performance of the Seller shall be correspondingly extended.

This document sets forth the terms and conditions pursuant to which the purchaser ("Purchaser") will purchase and New Grind Inc. ("Seller") will sell the products, accessories, attachments (collectively the products ") ordered by the Purchaser. These terms and conditions shall govern and apply to the sale of Seller's products to Purchaser, regardless of any terms and conditions appearing on any purchase order or other forms submitted by Purchaser to Seller, or the inconsistency of any terms therein and herein.

RHINO VAC RV8 220V LIABILITY LIMITATIONS

The remedies of the user set forth under provisions of warranty outlined above are the exclusive and total liability of NewGrind Inc. with the respect to their sale or the equipment and service furnished hereunder, in connection with the performance or breach thereof, or from the sale, delivery, installation, repair or technical direction covered by or furnished under the sale, whether based on contract, warranty, negligence, indemnity, strict liability, or otherwise shall not exceed the purchase price of the unit of equipment upon which such liability is based. NewGrind Inc. will not in any event be liable to the user, any successors in interest or any beneficiary or assignee relating to this sale for any consequential, incidental, indirect, special or punitive damages arising out of this sale or any breach thereof, or any defects on, or failure of, or malfunction of the equipment under this sale based upon loss of use, lost profits or revenue, interest, lost goodwill, work stoppage, impairment of other goods, loss by reason of shutdown or nonoperation, increased expenses of operation of the equipment, cost of purchase or replacement power of claims of users or customers of the user for service interruption whether or not such loss or damage is based on contract, warranty, negligence, indemnity, strict liability, or otherwise. NewGrind Inc. reserves the right to modify, alter and improve any part or parts without incurring any obligation to replace any part or parts previously sold without such modified, altered or improved part or parts. No person is authorized to give any other warranty or to assume any additional obligation on NewGrind Inc.'s behalf unless made in writing and signed by an officer of NewGrind Inc.

TERMS & CONDITIONS

1. PRICE

All prices set forth on any purchase order or other document are F.O.B. Sellers facility or distribution point, as may be determined by Seller (F.O.B. Point). All prices are exclusive of any and all taxes, including, but not limited to, excise, sales, use, property or transportation taxes related to the sale or use of the products, now or hereafter imposed, together with all penalties and expenses. Purchaser shall be responsible for collecting and/or paying any and all such taxes, whether or not they are stated in any invoice for the Products. Unless otherwise specified herein, all prices are exclusive of inland transportation, freight, insurance and other costs and expenses relating to the shipment of the Products from the F.O.B. point to Purchaser's facility. Any prepayment by Seller of freight insurance and other costs shall be for the account of Purchaser and shall be repaid to Seller.

2. PAYMENT TERMS

Payment terms are as follows: NewGrind Inc. Machines - Payment prior to delivery.

*All past due accounts are subject to a late payment fee of 1.5% per month or a maximum allowed by law if different, along with the expenses incidental to collection including reasonable attorney's fees and costs.

*Seller reserves the right to hold shipments against past due accounts.

*Seller reserves the right to alter payment terms.

3. FREIGHT TERMS

All shipments will be made F.O.B. shipping point as designated in these Terms and Conditions, and title shall pass at the F.O.B. point. Delivery to the initial common carrier shall constitute delivery to the Purchaser. Any claims for loss or damage during shipment are to be filed with carrier by the Purchaser.

RHINO VAC RV8 220V TERMS & CONDITIONS

Seller will not assume responsibility for the performance of the carrier. Backorders will be shipped in the most practical fashion with charges consistent with our freight policy established with the original order. UPS, FED EX, MAIL or shipments by other couriers are subject to the same terms and conditions as outlined in paragraph #3 "Freight Terms".

4. DELIVERY, DAMAGES, SHORTAGES

Seller shall use reasonable efforts to attempt to cause the Products to be delivered as provided for in these Terms & Conditions. Delivery to the initial common carrier shall constitute the delivery to the Purchaser. Seller's responsibility, in so far as transportation risks are concerned ceases upon the delivery of the Products in good condition to such carrier at the F.O.B. point and all the Products shall be shipped at the Purchaser's risk. Seller shall not be responsible or liable for any loss of income and/or profits, or incidental, special, consequential damages resulting from Seller's delayed performance in shipment and delivery.

5. RETURN OF DEFECTIVE PRODUCTS

Defective or failed material shall be held at the Purchaser's premises until authorization has been granted by Seller to return or dispose of Products. Products that are to be returned for final inspection must be returned Freight Prepaid in the most economical way. Credit will be issued for material found to be defective upon Seller's inspection based on prices at time of purchase.

6. PRODUCTS ORDERED IN ERROR

Products may be returned, provided that claim is made, and Seller is notified within 7 days of receipt of Products, and the Products are in original buyer's possession not more than 30 days prior to return, subject to Seller's approval. If Products are accepted for return, they must be Freight Prepaid and buyer will be charged a minimum of 15% restocking charge, plus a charge back for outbound freight charges if the original order was shipped prepaid. Returns are not accepted for any Products that are specifically manufactured to meet the buyer's requirement of either specifications or quantity.

7. AGREEMENTS

These Terms and Conditions constitute the entire agreement between Seller and Purchaser as it relates to terms and conditions of sale and supersedes any and all prior oral or written agreements, correspondence, quotations or understandings heretofore in force between the parties relating to the subject matter hereof.

There are no agreements between Seller and Purchaser with respect to the Product herein except those specifically set forth in and made part of these terms and conditions. Any additional terms, conditions and/or prices are rejected by Seller. These terms and conditions may be modified, cancelled or rescinded only by a written agreement of both parties executed by their duly authorized agents.



NewGrind Inc.
103B- 81 Golden Drive, Coquitlam BC, CANADA V3K 6R2
Telephone: 1-888-467-0242
sales@newgrind.com
www.newgrind.com